

Hannanmetals



**Exploration for Large Gold - Copper Systems in
Peruvian Frontiers: Exploration Opportunities
and Social Engagement in the Back Arc**

**JUNTOS POR MÁS
OPORTUNIDADES Y
BIENESTAR PARA TODOS**



Zac Turschwell – Exploration Manager

25/09/2025



Disclaimer

Accuracy of Information: Readers are directed to the public disclosure of Hannan Metals Limited (“Hannan”) available under Hannan’s profile on the System for Electronic Document Analysis and Retrieval (“SEDAR”) at www.sedar.com. Information contained in this presentation was believed to be accurate at the time it was posted, but may be superseded by more recent public disclosure of Hannan. Hannan makes no representations or warranties as to the accuracy, reliability, completeness or timeliness of the information in this presentation.

Forward-Looking Information: Some of the statements contained in this presentation may be forward-looking statements or forward-looking information within the meaning of applicable securities laws (collectively, “forward-looking statements”). All statements herein, other than statements of historical fact, are forward-looking statements. Although Hannan believes that such statements are reasonable, it can give no assurance that such expectations will prove to be correct. Forward-looking statements are typically identified by words such as: believe, expect, anticipate, intend, estimate, postulate, and similar expressions, or are those, which, by their nature, refer to future events. Hannan cautions investors that any forward-looking statements are not guarantees of future results or performance, and that actual results may differ materially from those in forward-looking statements as a result of various factors, including, but not limited to, capital and other costs varying significantly from estimates, changes in world metal markets, changes in equity markets, planned drill programs and results varying from expectations, delays in obtaining results, equipment failure, unexpected geological conditions, local community relations, dealings with non-governmental organizations, delays in operations due to permit grants, environmental and safety risks, and other risks and uncertainties. Any forward-looking statement speaks only as of the date on which it is made and, except as may be required by applicable securities laws, Hannan does not assume the obligation to revise or update forward-looking statements or information that may be contained in this presentation or to revise them to reflect the occurrence of future unanticipated events.

Qualified Person: The qualified person for Hannan’s projects, Michael Hudson, Executive Chairman & CEO for Hannan, and a Fellow of the Australasian Institute of Mining and Metallurgy, has reviewed and verified the contents of this presentation.

Overview

A gold-copper focused exploration company operating in untapped regions

- Focus on new frontiers – **alkaline epithermal gold discovery:**
- 135.2m @ 1.3g/t Au and 9 g/t Ag including:
 - 26.0 m @ 5.4 g/t Au and 27 g/t Ag
- Momentum – first drill permits, drilling now
- Building a pipeline of drill ready porphyry- alkaline epithermal targets over the next five years
- JOGMEC (JV – San Martin) and TECK (9.9% equity) partnerships



Valiente (Peru): multiple (up to 18) major copper-gold porphyry, skarn, epithermal systems located in a new, unexplored Miocene belt (100% owned)

San Martin (Peru): high-grade sediment hosted copper-silver analogous to the Central African copper belt (JOGMEC JV)



Hannan's story

A gold-copper focused exploration company operating in untapped regions

1990's

- Hannan Founders with strong Peruvian database background

Minimal Past Exploration

- Some majors and juniors tested the ground
- Lack of infrastructure, safety were issues

2021-23 Discovery

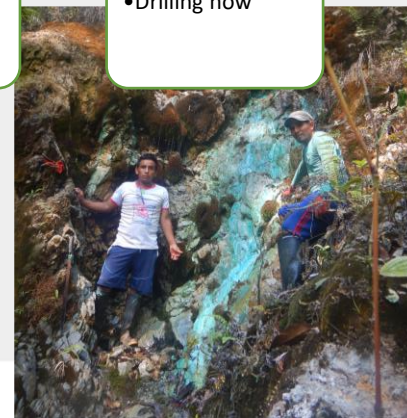
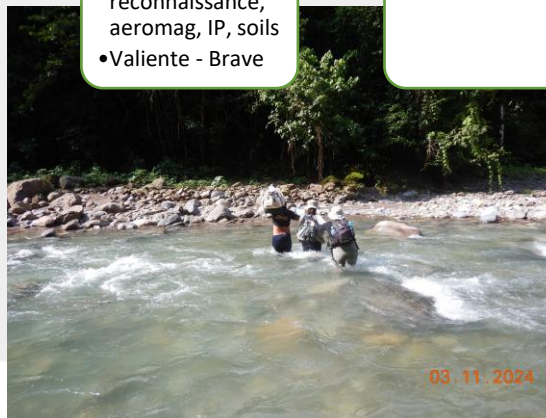
- Grassroots Prospecting
- Stream sediments, reconnaissance, aeromag, IP, soils
- Valiente - Brave

New Belt

- 150 km Miocene alkaline porphyry epithermal belt

Key Advances

- Large scale data collection
- Social licence
- Multiple prospects
- Drilling now



ESG FRAMEWORK

- **Environmental Stewardship:**
 - Low-impact prospecting,
 - Programs in compost, biopesticides, biofertilizers
- **Governance:**
 - Valiente project council
 - Transparent communication
- **Social & Shared Value:**
 - Local workforce engagement; priority hiring and training
 - Repair and maintenance of infrastructure
 - Support for schools, roads, bridges



Peru: Targeting Giant Metal Districts **Big company land position**

Hannan Tenure in Peru: 1,430 km²

Valiente 910 km²

Discovery of 18 Miocene-age porphyry copper-gold belt hosting multiple mineralizing systems

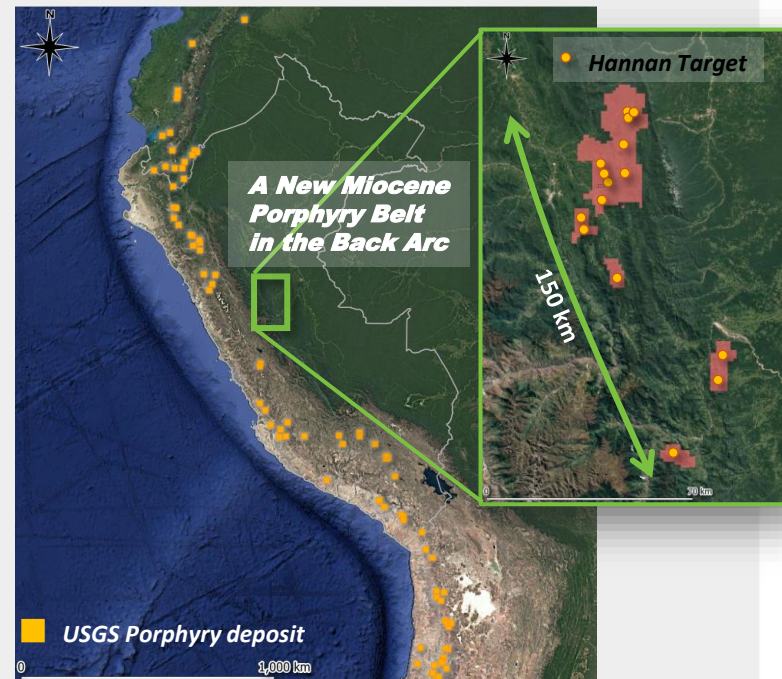
San Martin 520 km²

Unexplored sediment-hosted copper-silver with key features analogue to the Central African Copper Belt



WHY THE BACK ARC?

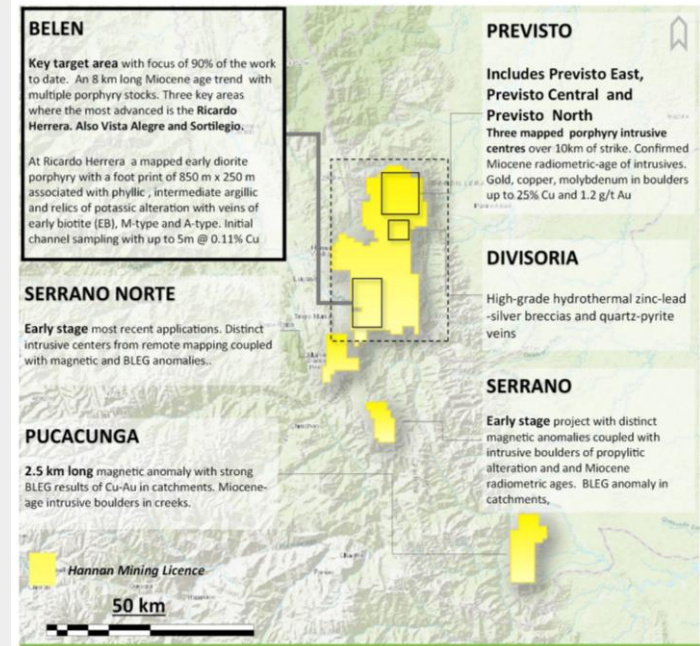
- 1. Untapped Discovery Potential:** Back-arc basins remain significantly under-explored, unlike mature districts where most near-surface deposits have been identified.
- 2. Favorable Metallogenic Setting:** The unique geodynamic environment of back-arc regions creates ideal conditions for developing large, high-grade deposits.
- 3. First-Mover Advantage:** Low competition for ground, ability to secure district-scale position. Higher risk-reward profile than mature, fragmented districts.



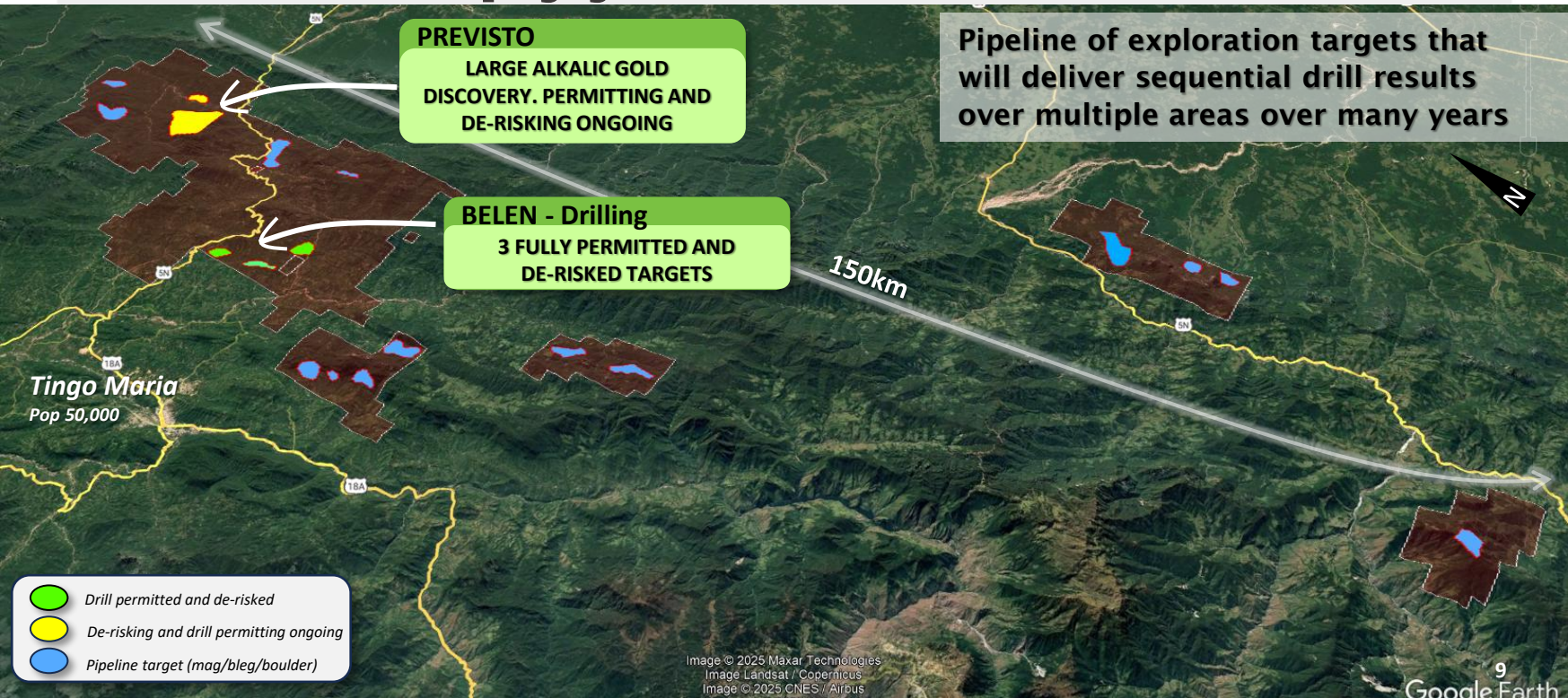
Peru: Valiente Alakaline Au-Cu Cluster

A giant metal district in pre-discovery stage

- ✓ Footprint comparable to giant mineralized districts in the Andes: Cajamarca, Moquegua
- ✓ Multiple intrusive events peaking at 21 Ma, 15 Ma and 11 Ma (Miocene-age – key timing in Andes)
- ✓ Mineralized porphyry/skarn/epithermal targets identified in at least 18 areas across the whole belt.
- ✓ Pipeline of exploration targets that will deliver sequential drill results over multiple targets over many years.



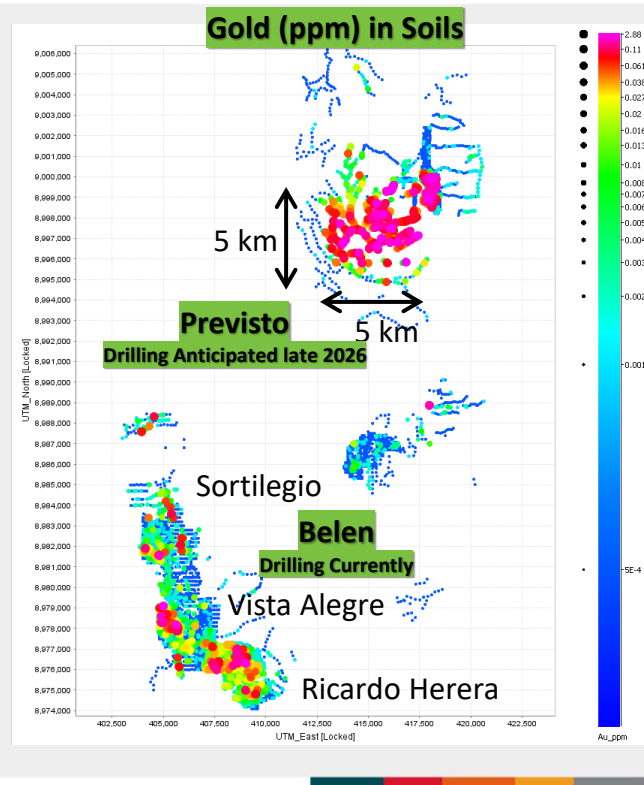
Peru: Valiente Porphyry Cluster **A giant metal district in early discovery stage**





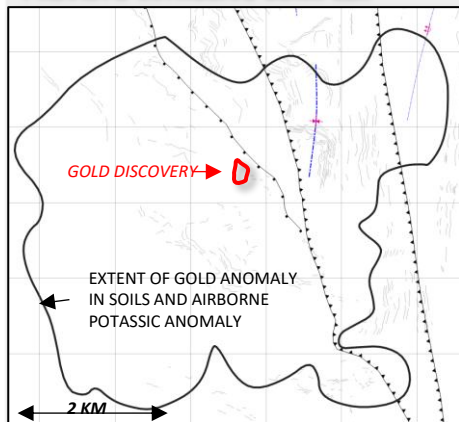
Previsto: a Giant Gold Target

- ✓ Large-scale target 5 km x 5 km
- ✓ Discovery - alkaline epithermal gold channels:
 - 69.1 m @ 2.4 g/t Au and 13 g/t Ag, including:
 - 26.0 m @ 5.4 g/t Au and 27 g/t Ag
- ✓ Outcropping copper target over 750m x 200m :
 - 126 m @ 0.22 % Cu
 - 192 m @ 0.11 % Cu
- ✓ In 2024/25 Hannan completed
 - Top ridge soil survey (infill is ongoing)
 - IP orientation survey over 15-line km
 - High resolution LiDAR survey
 - Detailed mapping and channel sampling (ongoing)
 - Mapping and prospecting of creeks (ongoing)



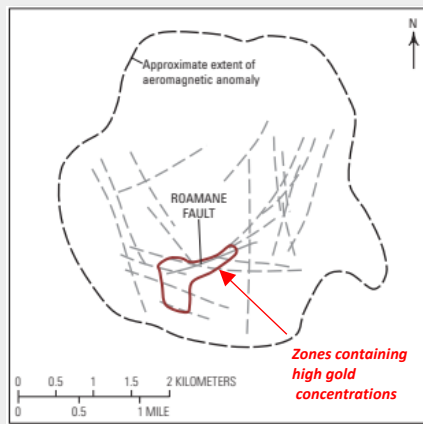
Previsto Compared to Major Deposits

**HANNAN ALKALINE EXPLORATION TARGET:
PREVISTO INTRUSIVE COMPLEX**



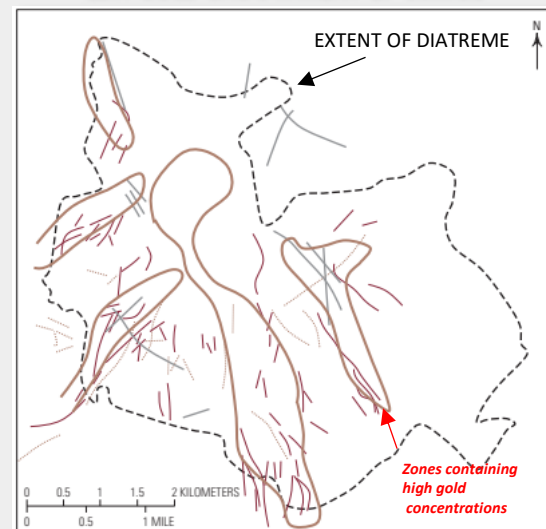
DISCOVERED DEC 2024

**PORGERA INTRUSIVE COMPLEX:
EST. GOLD ENDOWMENT 33-37MOz**



BREAKTHROUGH 1982

**CRIPPLE CREEK DISTRICT HISTORIC
EST. GOLD ENDOWMENT 27-30MOz**

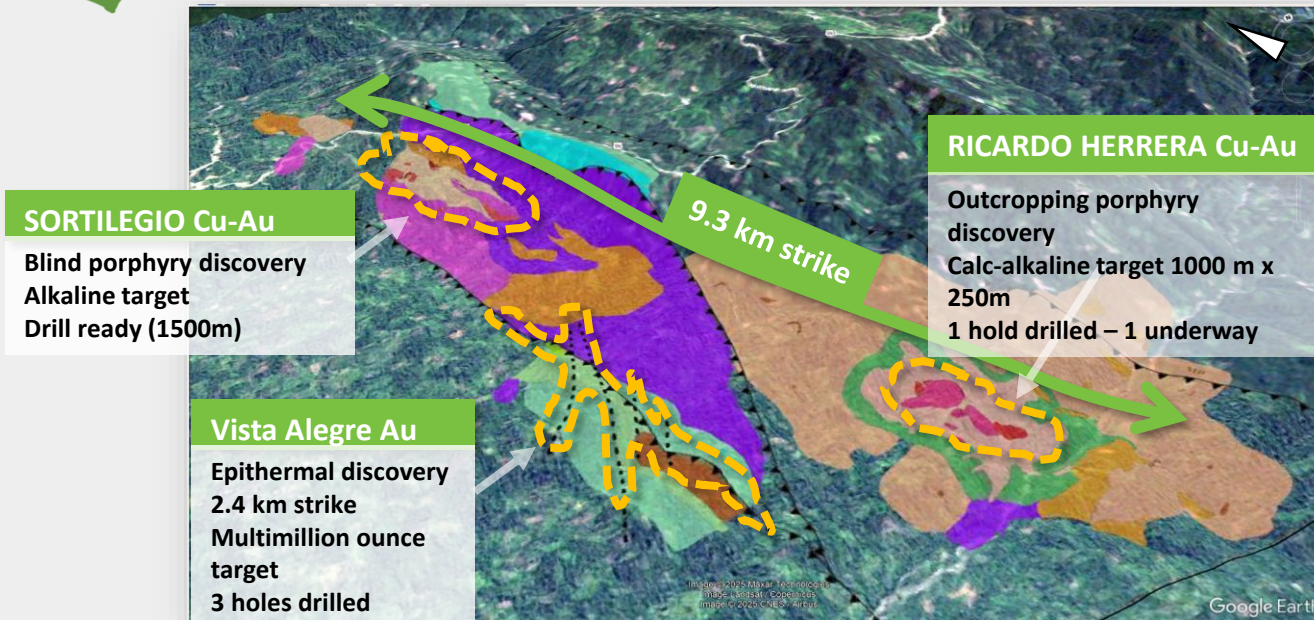


DISCOVERED IN 1890





Belen Overview – 3 targets - now drilling

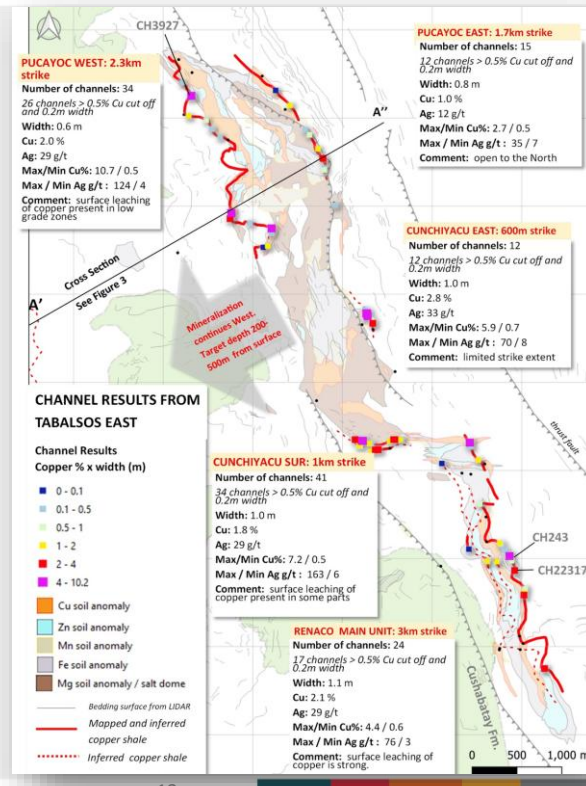




Peru – San Martín

Sediment Hosted Cu-Ag

- Stratabound: hosted in reduced shales and sandstones
- Outcropping Cu-Ag mineralization over 7 km strike
- 121 channels average 2.05% Cu and 30 g/t Ag over 0.9 m (0.5% Cu cut-off)
- LiDAR extremely useful in mapping outcropping formlines
- 2D Seismic from 1990's used to map fluid pathways and basin structures





Unveiling a new chapter in Peru's metallogenic evolution while setting the standard for community-partnered exploration

- **Discovery of multiple mineralization styles in a new Miocene back-arc metallogenic belt** - 150 km strike length, 910 km² tenure, 18 porphyry-epithermal-skarn systems identified
 - **Previsto Alkaline Complex** - Flagship discovery, 135.2 m @ 1.3 g/t Au including 26.0 m @ 5.4 g/t Au, 5 km x 5 km footprint
- **First-mover advantage in unexplored back-arc setting**
 - District-scale land position (1,430 km² total Peru)
 - JOGMEC joint venture validation (San Martin)
 - Teck Resources 9.9% strategic investment
- **Community-Integrated Development Model, 100% local workforce engagement, Infrastructure co-investment, Agricultural diversification programs, Proactive stakeholder councils**
- **Pipeline Development with 3 drill-permitted targets** currently active
- **Sequential target advancement** - 5-year drill pipeline



HANNAN METALS

Exploration for Large Gold - Copper Systems in
Peruvian Frontiers: Exploration Opportunities
and Social Engagement in the Back Arc

 **Hannanmetals**

TSXv: HAN

Contact

HANNAN METALS LTD
INVESTOR RELATIONS (CANADA)



Mariana Bermudez
- Corporate Secretary
Tel: +1 (604) 685 9316
Fax: +1 (604) 683 1585
info@hannanmetals.com



JUNTOS POR MÁS
OPORTUNIDADES Y
BIENESTAR PARA TODOS



PERUMIN
37 CONVENCION MINERA



**INSTITUTO
DE INGENIEROS
DE MINAS
DEL PERÚ**

